

CONGAREE
— BLUFF —

HOMESITE 3 — THE BROAD

Front Elevation



Make this beautifully designed home your escape from the city rush. Located in the Congaree Bluff neighborhood in Cayce, this new home is minutes from Downtown Columbia, close to all of the action in the Vista, on Main Street, and at USC, while maintaining an oasis feel. It features hardy plank siding, 4 bedrooms, 2.5 baths and lots of space and storage for a growing family or one that visits often. The first floor owners suite features a double vanity, a walk-in shower and huge walk-in closet. The main floor also showcases an enormous great room and a large, open kitchen with granite counters, stainless steel appliances, and eating area. Upstairs are two large bedrooms with a Jack-and-Jill bathroom. Don't miss the back patio and 2-car garage. This home is currently being built and will be ready for you by March 2018.



LadyStreetBuilders.com

CongareeBluff.com · 803-760-9106

Drawings are for illustrative purposes only and may vary in precise detail from the actual plans and specification. See agent for details.



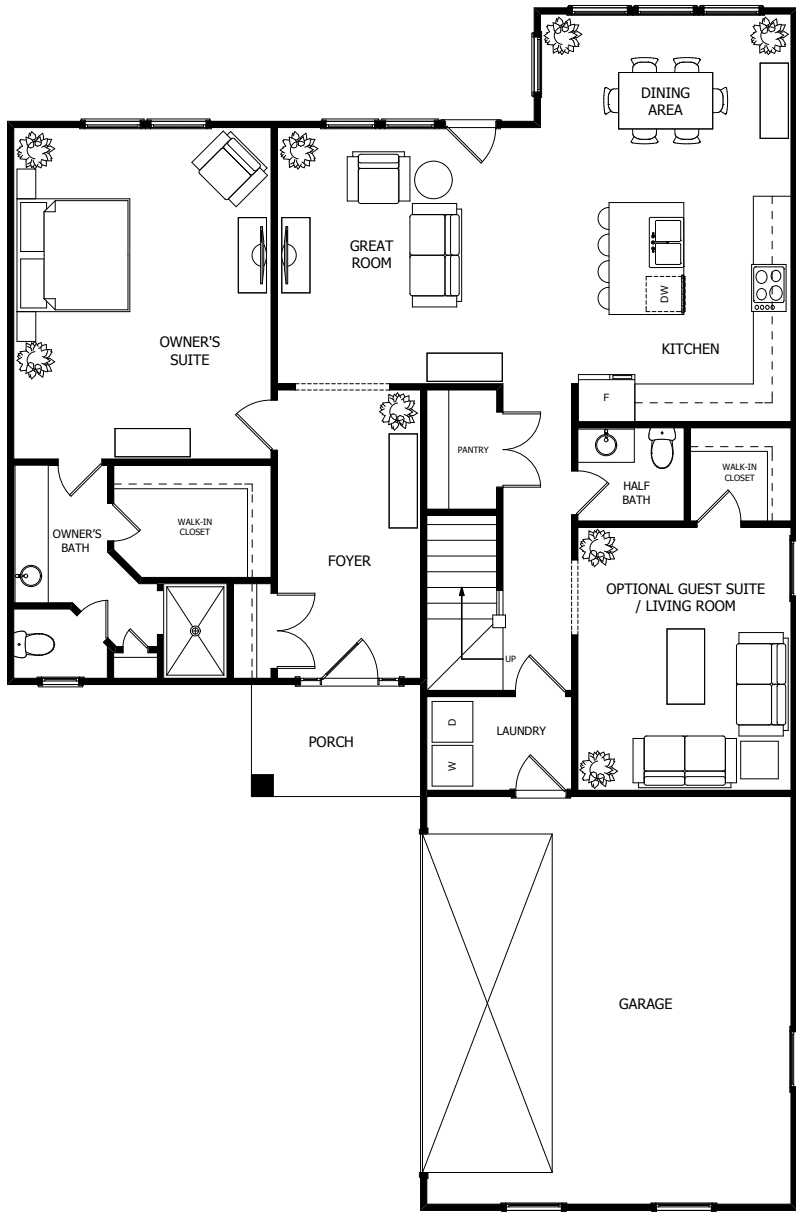


CONGAREE

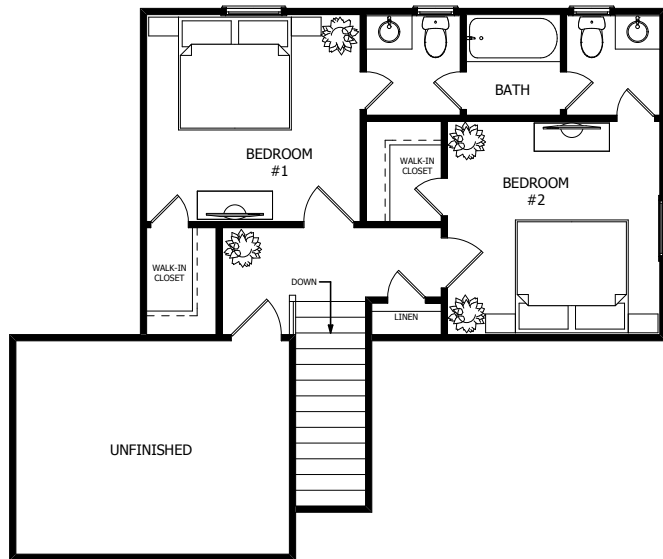
— BLUFF —

HOMESITE 3 – THE BROAD FLOOR PLAN

Main Level



Upper Level



LadyStreetBuilders.com

CongareeBluff.com · 803-760-9106

Drawings are for illustrative purposes only and may vary in precise detail from the actual plans and specification. See agent for details.

